



# Anti Bullying and Respectful Behaviour **MARCH**



# Why Respect and Anti Bullying Matters

- 1 Bullying has **no place** in the sport or our community.
- 2 Football is about teamwork, skill, and **respect**.
- 3 Every player deserves to feel **valued** and **safe**.



# What is Bullying?

## Physical

Hitting, kicking, or pushing



## Verbal

Insults, name-calling, and belittling



## Cyber

Using digital platforms to harm others



## Social

Exclusion or spreading rumors



## Emotional Harm

Anxiety, depression, and low self esteem.

## Long term Consequences

Lasting effects on players' mental health and the club's culture.

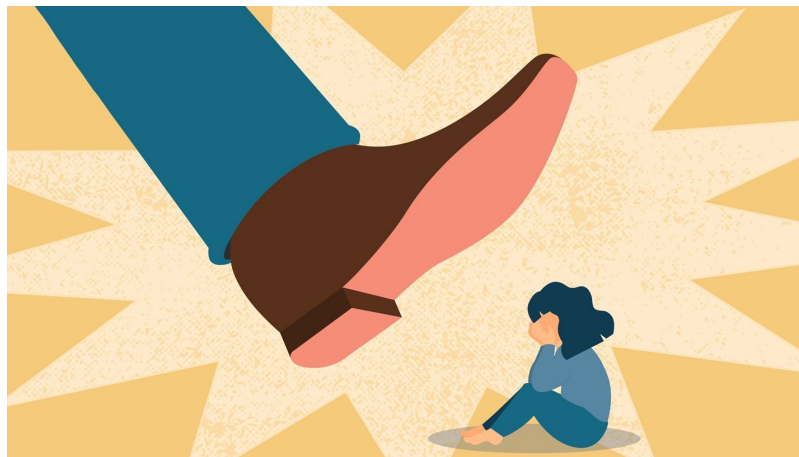


## Physical Harm

Injuries and physical distress.

## Impact on Teamwork

A toxic atmosphere can reduce team performance and morale.



# Effects of Bullying



# Respectful Behaviour in Football



## Respect Coaches

Trust in their guidance and decisions



## Respect Teammates

Support each other and celebrate success together



## Respect Officials

Understand their role in keeping the game fair

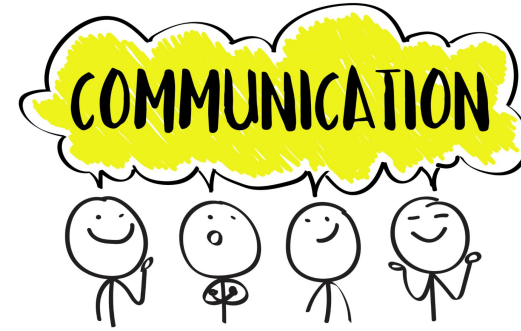


## Respect Opponents

Play fair, be gracious in both victory and defeat

## Lead by Example

Coaches, players and volunteers set the tone



## Open Communication

Encourage players to speak out if they feel bullied or witness bullying

# How to Prevent Bullying



## Support Each Other

Be inclusive and welcoming



## Zero Tolerance Policy

Any form of bullying will be addressed immediately



## BEHAVIOUR AND DISCIPLINARY POLICY

Canterbury Lions Football Club's (CLFC) Policy on Behaviour and Discipline outlines the expectations and standards for members, players, officials, parents and supporters associated with the club.

### EXEMPLARY SPORTSMANSHIP

- All individuals associated with CLFC must display exemplary sportsmanship and behaviour on and off the field.

### RESPECT TOWARDS MATCH OFFICIALS

- Members, players, team officials, parents and supporters must show respect towards match officials, whether officially appointed, appointed by the club or standing in for an official.
- Argumentative behaviour and inappropriate language towards officials will not be tolerated.

### COMPLIANCE WITH REQUESTS

- Individuals must abide by the requests of CLFC Committee Members, Football Canterbury officials, referees, team coaches and managers.
- Always display polite conduct towards these officials.

### REFEREE AUTHORITY

- Referees are authorised to penalise players for inappropriate play or behaviour on the field.
- Referees may also request team officials or supporters to leave the field in the case of inappropriate behaviour.
- Referees' penalties and requests should be complied with gracefully and without argument.

### DISPUTES AND DISCIPLINARY COMMITTEE

- Players may be cited to appear before the CLFC Disputes and Disciplinary Committee (DDC)
- Players must make reasonable efforts to attend the hearing or inform the CLFC Administration of their inability within the required application period.
- The DDC may impose suspensions or other penalties as deemed appropriate.
- Failure to appear before the CLFC DDC may result in a decision and sanctions imposed in your absence.

### CLUB COMMITTEE AUTHORITY

- CLFC Committee reserves the right to impose suspensions independently or in addition to DDC suspensions.
- The Committee may require participation in "Club Service" activities as a form of disciplinary action.
- In extreme cases where player behaviour is considered to have brought the club into disrepute, the Club Committee can impose immediate de-registration from the club on a temporary or permanent basis.
- Player fees will not be refunded in such circumstances.

# CLFC Behaviour and Disciplinary Policy

All members to display exemplary sportsmanship  
and behaviour.

All members are to be respectful towards Match  
Officials.

All members must abide by the requests of CLFC  
Committee Members, Football Canterbury  
officials, referees, team coaches and managers.

Respect Referees authority.

Respect Club Committee authority.

CLFC Behaviour and Disciplinary Policy